

# XINGHANG

Smart Metering



## Embrace The Future With Ultrasonic Water Meter Technology



Application Standards

**XINGHANG**  
WWW.XINGHANGMETERS.COM

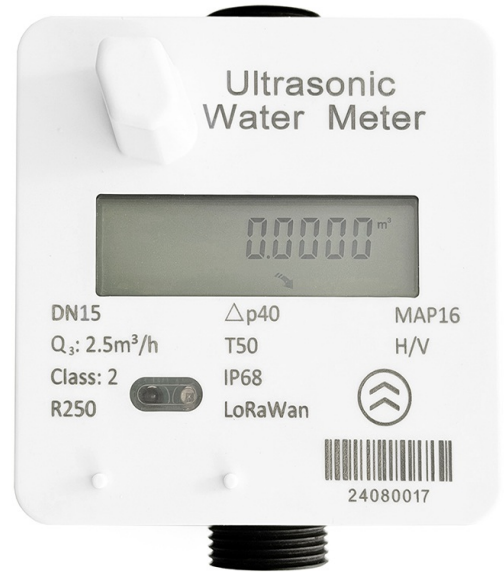
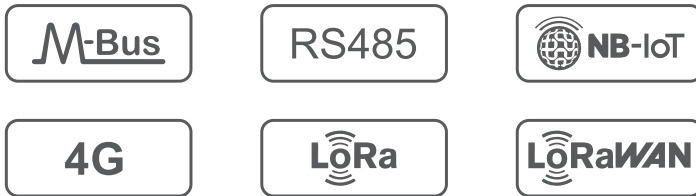
## LXC-15B-25B

### Application

LXC-15B-25B is an exceptional reliability with IP 68. Its body is fabricated from durable PA66 composite with lead free environmental friendly.

- M-BUS/RS485 Protocol: *EN13757*
- Modbus Baud Option: *2400 or 9600*
- Pulse Option: *1L/Pulse or 10L/Pulse*
- LoRa/LoRaWAN Frequency Rate: *868MHz, 915MHz, 902MHz, 920MHz, etc*

### Communication

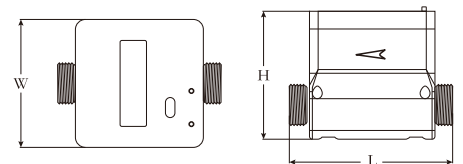


### Feature Highlights

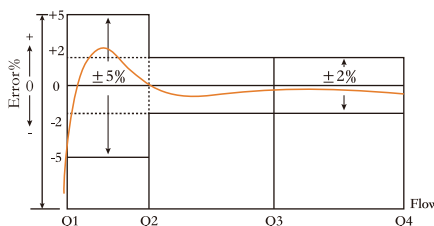
- Max battery life 15 years
- Exceptional IP68 proof
- Install in any position
- Lead free, RoHS
- Detecting pipe leaks
- UV, moisture resistant

### Dimensions

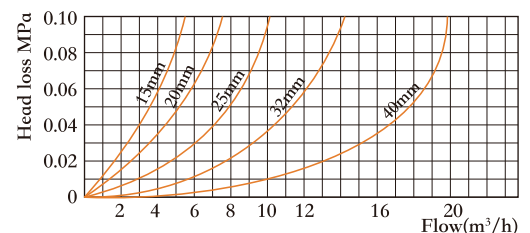
Nominal Diameter (mm)	DN15	DN20	DN25
Thread	G3/4B	G1B	G1 1/4B
L (mm)	110	130	160
H (mm)	80	85	90
W (mm)	85	85	85



### Error Curve



### Head Loss Curve



## Main Technical Specifications

	DN15	DN20	DN25
$Q_4(Q_{\text{overload}})m^3/h$	3.125	5	7.875
$Q_3(Q_{\text{max/permanent}})m^3/h$	2.5	4	6.3
$Q_2(Q_{\text{transitional}})m^3/h$	0.016	0.0256	0.040
$Q_1(Q_{\text{min}})m^3/h$	0.010	0.016	0.0252
Start Flow Rate $m^3/h$	0.003	0.005	0.005
Dynamic Range	R250		
Standard	ISO4064 / OIML R49		
Measured Medium	Water		
Metrological Class	Class 2		
Battery	3.6V, Li-battery ER26500(Default) / ER34615		
Battery Life	≥10 Years		
Consumption	<0.2mW		
Pressure Loss	Δp40		
EMC	E1		
Environmental Classification	Class B		
Protection Class	IP68		
Medium Temperature	T50/T90		
Storage Temperature	-25~55°C		
MAP	PN16		
Accuracy	±5% in range $Q_1 \leq Q < Q_2$ ±2% in range $Q_2 \leq Q \leq Q_4$		
Material	Composite Material		
The Installation Sensivity	U0/D0		
Climatic and Mechanical	M1		
Key-press	Touch control technology		
Display	LCD 9 digit + prompt		
Menu Contents	Instantaneous flow ( $m^3/h$ ), cumulative flow ( $m^3$ ), full screen display, meter address, cumulative working time (h), date (year/month/day), caliber, software version		
Display Range	Total flow: $0m^3 \sim +99999.9999m^3$		
Communication	Optical interface, LoRaWAN, LoRa RF, M-BUS, RS-485, wM-Bus, NB-IoT, 4G(CAT-1), Pulse output, Sigfox.		
Display and Indication	Unit: L/ $m^3$ /Gal (optional)		
Data Storage	84 months		

## Installation Position

